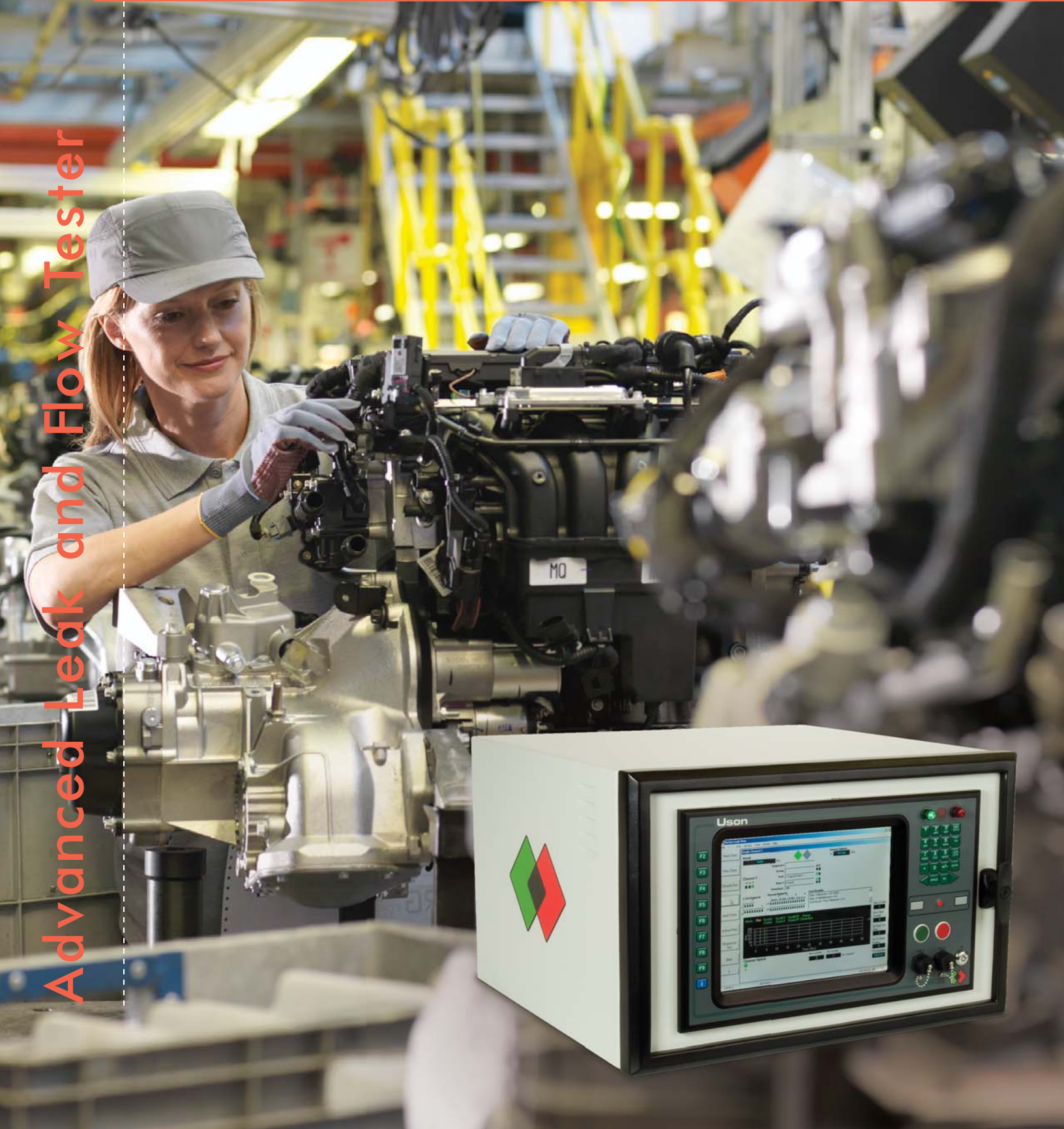


Uson
for good measure

Vector

Advanced Leak and Flow Tester



Vector

THE ULTIMATE IN TESTING PERFORMANCE, SPEED, FLEXIBILITY AND DURABILITY

Performance, speed, flexibility and durability are the watchwords of a new generation of manufacturers. Product expectations expand. Production cycles shrink. Yet Vector remains the most advanced leak and flow tester of its class.

The embedded Windows 10™ operating system makes Vector extremely powerful, yet simple to use. Its unique modular design lets you choose only the features you desire while still allowing you to easily and economically expand capabilities as needed.



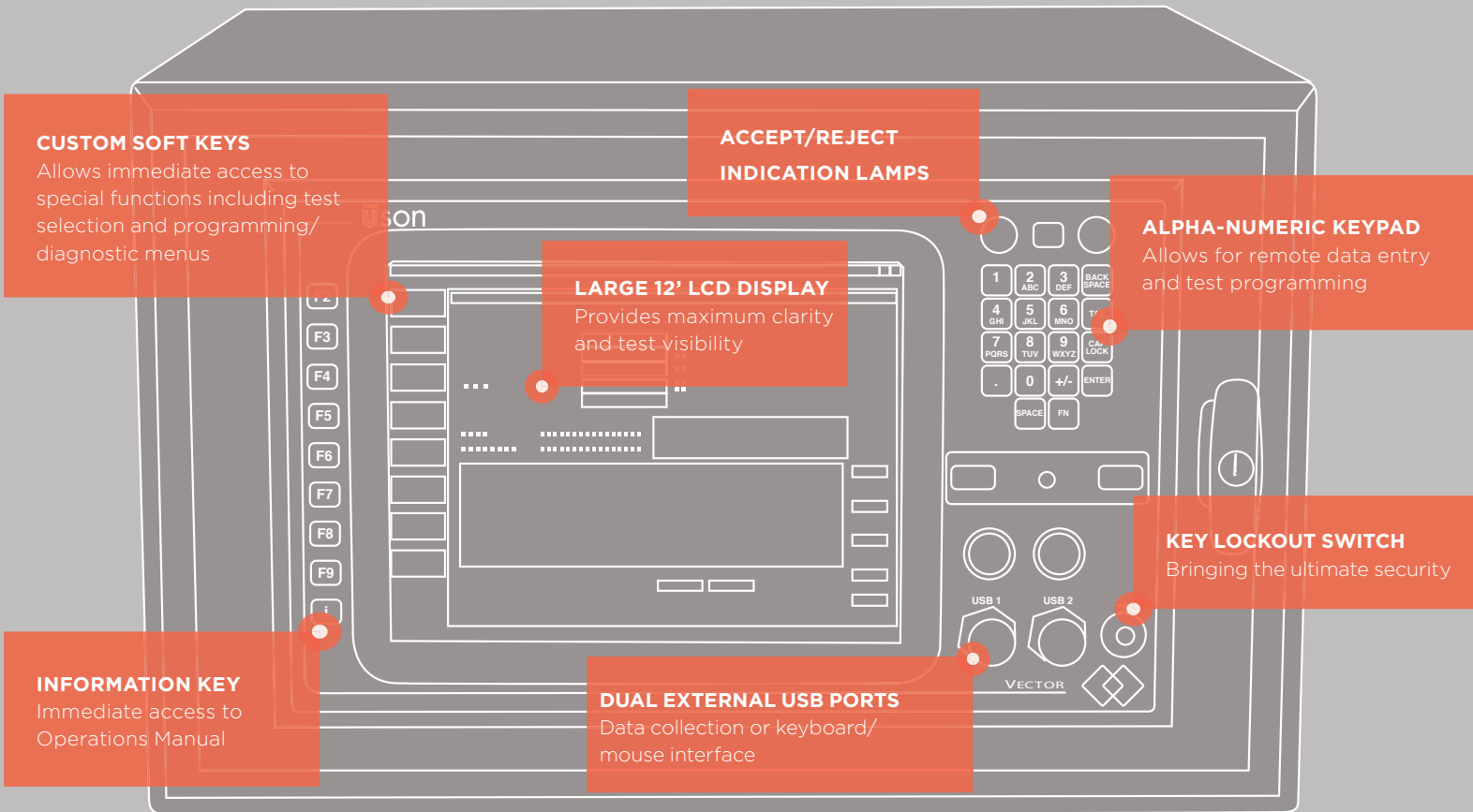
▲ NEMA ENCLOSURE VERSION (6U)

THE INDUSTRY'S FASTEST TESTER

With the Vector's advanced design and unique software architecture, it can perform leak and flow tests faster than any other tester available on the market, resulting in increased production rates.

ALSO THE MOST ACCURATE

Vector not only performs tests faster than other testers, it maintains the industry's highest degree of accuracy and repeatability, while eliminating false rejects and keeping defective products from reaching the market.



AND MOST VERSATILE

Vector is capable of performing virtually every type of leak and flow test. The modular design allows you to expand your system's capabilities easily. A single Vector tester can perform up to 10 independent or concurrent tests.

USING COMMON HARDWARE

Vector is built on a universal platform using common hardware and software across the entire family, which increases reliability, reduces downtime and significantly lowers overall ownership costs.

POWERFUL, SIMPLE SOFTWARE

Vector's software is best described as extremely powerful, yet very simple. That may not sound feasible, but you'll quickly appreciate the simplicity of the Vector as you easily navigate through the intuitive Windows 10™ based menu structure.

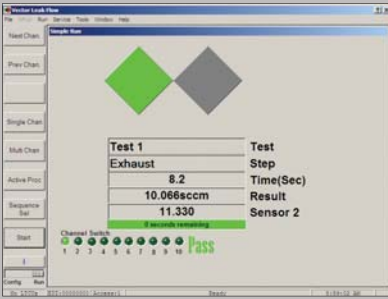
EASY TO PROGRAM

Programming Vector is simple and straightforward. Vector software is structured around a wide variety of preformatted test configurations. You can use one of the preformatted tests, with your accept/reject

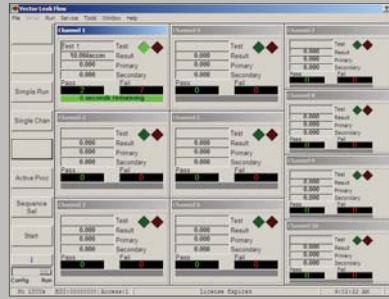
limits, or you can easily modify any of the tests to fit your specific application. An unlimited number of test configurations can be stored on Vector's hard drive.

EASY TO USE

With Vector, you are not forced to purchase an application-specific tester. In other words, you are not required to buy a mass flow tester, a pressure decay tester, a differential pressure tester, a vacuum tester, etc. Vector software is so flexible it allows you to customize the tester for your application. If your

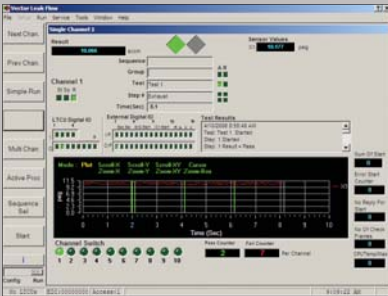


SIMPLE RUN WINDOW

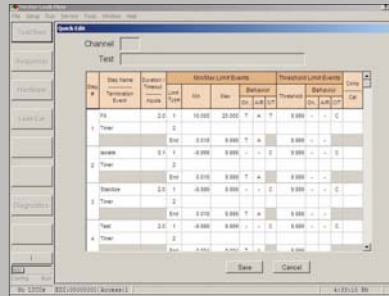


MULTI CHANNEL RUN WINDOW

Vector's operator interface provides a simple, yet informative and intuitive menu system allowing ease of use for normal day-to-day operation, as well as diagnostic troubleshooting menus for solving difficult testing issues.



SINGLE CHANNEL RUN WINDOW



SIMPLIFIED PROGRAMMING WINDOW



DIAGNOSTIC TROUBLESHOOTING WINDOW

application is best served by a mass flow test technique, you can configure Vector as a mass flow tester. If a differential pressure test is what you need, Vector accommodates that too. In addition to supporting unlimited types of tests, the unique flexibility of Vector software lets you add or change functionality as future requirements dictate.



▲ NEMA ENCLOSURE VERSION (3U)

THE VECTOR SERIES, THE FASTEST, MOST POWERFUL TESTERS ON THE MARKET, DELIVERING UNRIVALED ACCURACY AND REPEATABILITY FOR A WIDE RANGE OF APPLICATIONS, INCLUDING AUTOMOTIVE COMPONENTS, MEDICAL DEVICES AND AN ARRAY OF INDUSTRIAL PRODUCTS LIKE FAUCETS AND VALVES.



Uson L.P.

8640 N. Eldridge Parkway
Houston, TX 77041
USA
Phone: +1-281-671-2000
Fax: +1-281-671-2001
www.uson.com

Detroit Office

31471 Utica Road
Fraser, MI 48026
USA
Phone: +1-248-589-3100
Fax: +1-248-589-3103

Uson China

Room 601, 567 Lan Gao Road
Shanghai, 200333
P.R. China
Main: 021-583 65859, 021-583
59187 Fax: 021-583 59185,
021-337 73559
www.uson.com.cn

Uson Ltd.

Western Way
Bury St. Edmunds
Suffolk, IP33 3SP
United Kingdom
Phone: +44-1284-760606
Fax: +44-1284-763049

VECTOR SPECIFICATIONS

19" RACK VERSION OR NEMA ENCLOSURE VERSION

Operator Panel

Standard 7" color flat panel LCD display
Optional 12.1" color flat panel LCD display
12" pendant display

Electronics

Independent HMI with dedicated leak test control units (LTCU)
Each LTCU has its own CPU for I/O and signal conditioning

Pneumatics

Pneumatics may be mounted locally or remote

Enclosures

19" Rack 6U
19" Rack 3U
NEMA Enclosure 6U
NEMA Enclosure 3U
Pendent with 3U NEMA Enclosure
Pendent without 3U NEMA Enclosure

OPERATING SYSTEM	Windows 10™ Operating System
TEST PRESSURE RANGES	Vacuum to 1500 PSI
RESOLUTION	Transducer dependent 0.000001 PSI
FLOW RANGES	0 to 1000 SLPM <i>Other ranges available upon request</i>
NO. OF CHANNELS	Configurable up to 10 totally independent <i>*Excluding bench top version (4 channel max)</i>
NO. OF PROGRAMS	No restrictions
COMMUNICATION	Ethernet, RS-232, USB
PROTOCOLS	Profibus Modbus Ethernet IP Interbus/S Device net Desktop emulator
TESTING MODES	Pressure decay, differential pressure decay, pressure increase, mass flow, laminar flow, force decay and vacuum configurations
OPTIONS	Roll-stand, Custom pneumatics, Temperature compensation, I/O interface
SOFTWARE FEATURES	Versatile, flexible pressure plot capabilities, online, real time statistical analysis package, on board tools including cycle time calculations, virtual leak calculator, built-in maintenance history, FMEA and Diagnostic Menu
MANUFACTURING STANDARDS	ISO 9001: 2015 certified Certified to CE requirements

Due to a program of continuous development, specifications may be changed without notice.