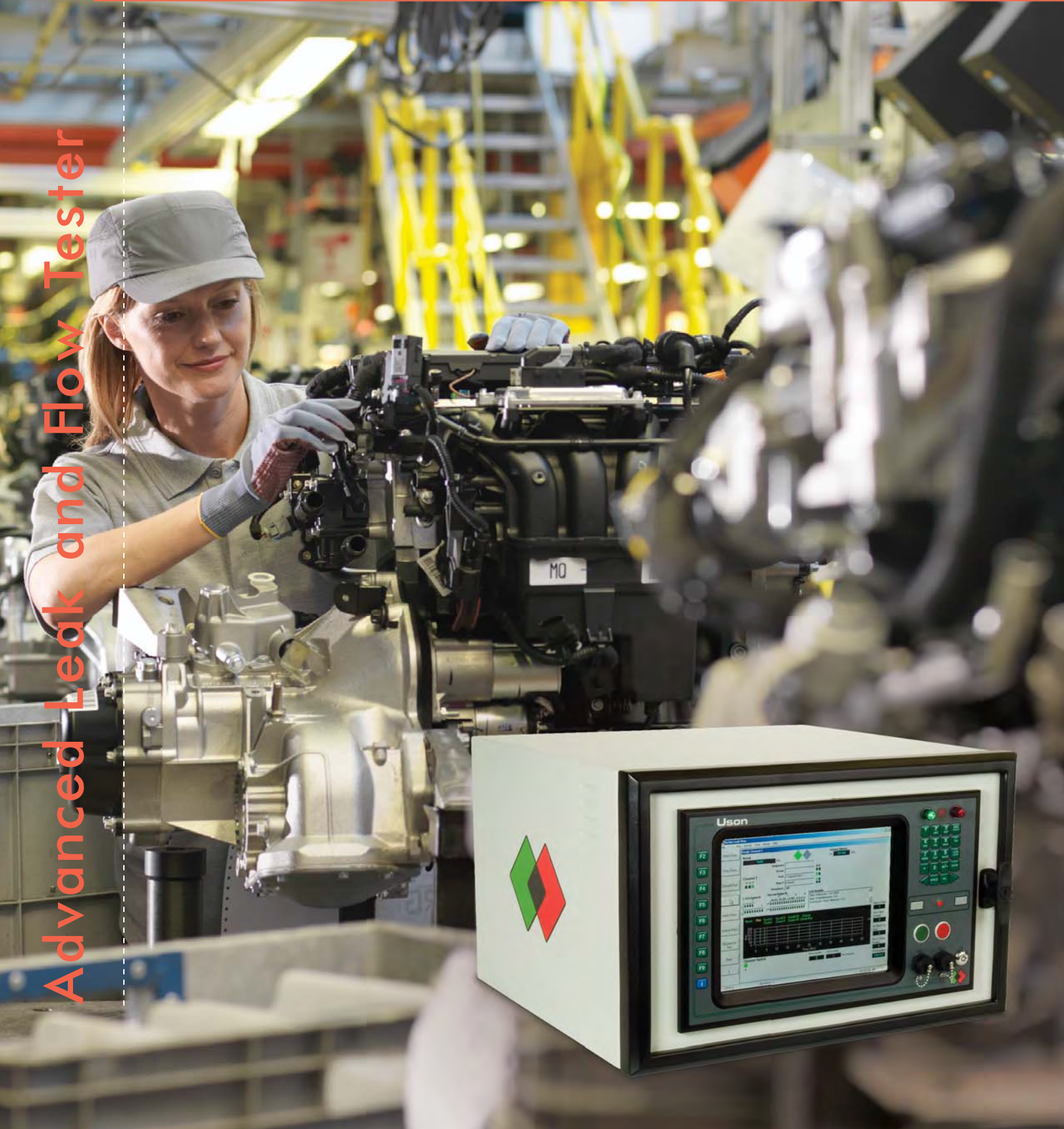


Uson  
for good measure

Vector

Advanced Leak and Flow Tester



# Vector

## THE ULTIMATE IN TESTING PERFORMANCE, SPEED, FLEXIBILITY AND DURABILITY

Performance, speed, flexibility and durability are the watchwords of a new generation of manufacturers. Product expectations expand. Production cycles shrink. Yet Vector remains the most advanced leak and flow tester of its class.

The embedded Windows 10™ operating system makes Vector extremely powerful, yet simple to use. Its unique modular design lets you choose only the features you desire while still allowing you to easily and economically expand capabilities as needed.



▲ NEMA ENCLOSURE VERSION (6U)

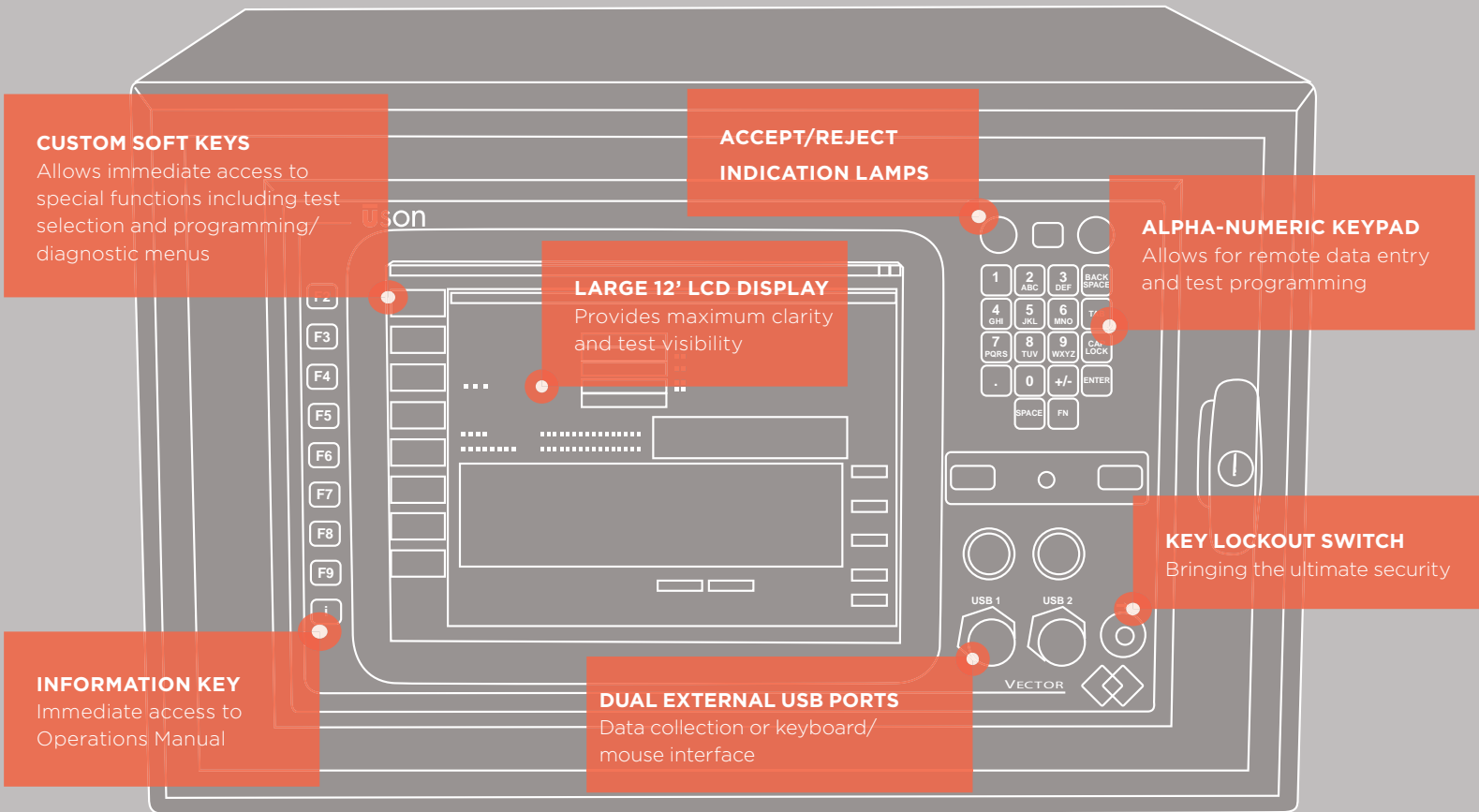
### THE INDUSTRY'S FASTEST TESTER

With the Vector's advanced design and unique software architecture, it can perform leak and flow tests faster than any other tester available on the market, resulting in increased production rates.

### ALSO THE MOST ACCURATE

Vector not only performs tests faster than other testers, it maintains the industry's highest degree of accuracy and repeatability, while eliminating false rejects and keeping defective products from reaching the market.





**CUSTOM SOFT KEYS**

Allows immediate access to special functions including test selection and programming/diagnostic menus

**ACCEPT/REJECT INDICATION LAMPS**

**LARGE 12" LCD DISPLAY**  
Provides maximum clarity and test visibility

**ALPHA-NUMERIC KEYPAD**  
Allows for remote data entry and test programming

**INFORMATION KEY**  
Immediate access to Operations Manual

**DUAL EXTERNAL USB PORTS**  
Data collection or keyboard/mouse interface

**KEY LOCKOUT SWITCH**  
Bringing the ultimate security

**AND MOST VERSATILE**

Vector is capable of performing virtually every type of leak and flow test. The modular design allows you to expand your system's capabilities easily. A single Vector tester can perform up to 10 independent or concurrent tests.

**USING COMMON HARDWARE**

Vector is built on a universal platform using common hardware and software across the entire family, which increases reliability, reduces downtime and significantly lowers overall ownership costs.

**POWERFUL, SIMPLE SOFTWARE**

Vector's software is best described as extremely powerful, yet very simple. That may not sound feasible, but you'll quickly appreciate the simplicity of the Vector as you easily navigate through the intuitive Windows 10™ based menu structure.

**EASY TO PROGRAM**

Programming Vector is simple and straightforward. Vector software is structured around a wide variety of preformatted test configurations. You can use one of the preformatted tests, with your accept/reject

limits, or you can easily modify any of the tests to fit your specific application. An unlimited number of test configurations can be stored on Vector's hard drive.

**EASY TO USE**

With Vector, you are not forced to purchase an application-specific tester. In other words, you are not required to buy a mass flow tester, a pressure decay tester, a differential pressure tester, a vacuum tester, etc. Vector software is so flexible it allows you to customize the tester for your application. If your

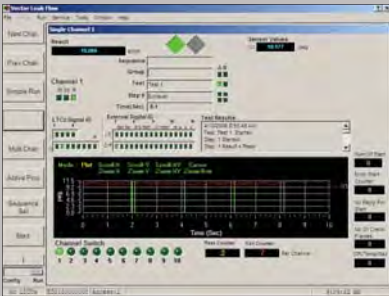


**SIMPLE RUN WINDOW**

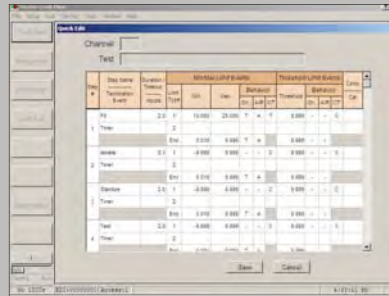


**MULTI CHANNEL RUN WINDOW**

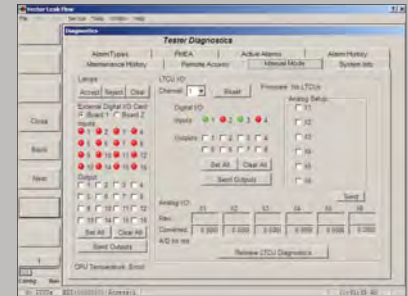
Vector's operator interface provides a simple, yet informative and intuitive menu system allowing ease of use for normal day-to-day operation, as well as diagnostic troubleshooting menus for solving difficult testing issues.



**SINGLE CHANNEL RUN WINDOW**



**SIMPLIFIED PROGRAMMING WINDOW**



**DIAGNOSTIC TROUBLESHOOTING WINDOW**

application is best served by a mass flow test technique, you can configure Vector as a mass flow tester. If a differential pressure test is what you need, Vector accommodates that too. In addition to supporting unlimited types of tests, the unique flexibility of Vector software lets you add or change functionality as future requirements dictate.



▲ NEMA ENCLOSURE VERSION (3U)





THE VECTOR SERIES, THE FASTEST, MOST POWERFUL TESTERS ON THE MARKET, DELIVERING UNRIVALED ACCURACY AND REPEATABILITY FOR A WIDE RANGE OF APPLICATIONS, INCLUDING AUTOMOTIVE COMPONENTS, MEDICAL DEVICES AND AN ARRAY OF INDUSTRIAL PRODUCTS LIKE FAUCETS AND VALVES.





**Uson L.P.**

8640 N. Eldridge Parkway  
Houston, TX 77041  
USA  
Phone: +1-281-671-2000  
Fax: +1-281-671-2001  
www.uson.com

**Uson China**

Room 601, 567 Lan Gao Road  
Shanghai, 200333  
P.R. China  
Main: 021-583 65859, 021-583  
59187 Fax: 021-583 59185,  
021-337 73559  
www.uson.com.cn

**Uson Ltd.**

Western Way  
Bury St. Edmunds  
Suffolk, IP33 3SP  
United Kingdom  
Phone: +44-1284-760606  
Fax: +44-1284-763049  
www.uson.uk

**VECTOR SPECIFICATIONS**

**19" RACK VERSION OR NEMA ENCLOSURE VERSION**

**Operator Panel**

Standard 7" color flat panel LCD display  
Optional 12.1" color flat panel LCD display  
12" pendant display

**Electronics**

Independent HMI with dedicated leak test control units (LTCU)  
Each LTCU has its own CPU for I/O and signal conditioning

**Pneumatics**

Pneumatics may be mounted locally or remote

**Enclosures**

19" Rack 6U  
19" Rack 3U  
NEMA Enclosure 6U  
NEMA Enclosure 3U  
Pendent with 3U NEMA Enclosure  
Pendent without 3U NEMA Enclosure

<b>OPERATING SYSTEM</b>	Windows 10™ Operating System
<b>TEST PRESSURE RANGES</b>	Vacuum to 1500 PSI
<b>RESOLUTION</b>	Transducer dependent 0.000001 PSI
<b>FLOW RANGES</b>	0 to 1000 SLPM <i>Other ranges available upon request</i>
<b>NO. OF CHANNELS</b>	Configurable up to 10 totally independent <i>*Excluding bench top version (4 channel max)</i>
<b>NO. OF PROGRAMS</b>	No restrictions
<b>COMMUNICATION</b>	Ethernet, RS-232, USB
<b>PROTOCOLS</b>	Profibus      Modbus      Ethernet IP Interbus/S    Device net    Desktop emulator
<b>TESTING MODES</b>	Pressure decay, differential pressure decay, pressure increase, mass flow, laminar flow, force decay and vacuum configurations
<b>OPTIONS</b>	Roll-stand, Custom pneumatics, Temperature compensation, I/O interface
<b>SOFTWARE FEATURES</b>	Versatile, flexible pressure plot capabilities, online, real time statistical analysis package, on board tools including cycle time calculations, virtual leak calculator, built-in maintenance history, FMEA and Diagnostic Menu
<b>MANUFACTURING STANDARDS</b>	ISO 9001: 2015 certified Certified to CE requirements

*Due to a program of continuous development, specifications may be changed without notice.*

